

# FAIRFIELD INDUSTRIES INC.

NEW PRICE SCHEDULE 4/15/2015

SUPERSEDES 4/1/11

**SPILL CONTAINMENT**  
**And**  
**STREET ACCESS MANHOLES**  
**for UNDERGROUND**  
**And ABOVEGROUND TANKS**

SPILL CONTAINMENT MANHOLES  
MONITOR WELL SERIES MANHOLES

HEAVY DUTY STREET MANHOLES  
WATER TIGHT SERIES MANHOLES

LOCKING VAULTS

COMPOSITE MANHOLES

CUSTOM FABRICATION OF SPECIALTY ACCESS MANHOLES AND CONTAINMENT CHAMBERS



Phone (973) 483-0100    Fax (973) 483-5333

Toll Free (800) 207-7265

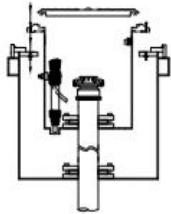
827 N. 6th Street ■ Newark, New Jersey 07107

[fairfield-industries.com](http://fairfield-industries.com)

# BELOW GRADE SPILL CONTAINERS

MODEL#	SIZE	DESCRIPTION	WT(LBS)	PRICE
--------	------	-------------	---------	-------

## SPILL CONTAINMENT MANHOLES FOR UNDERGROUND TANKS



SCM-5	2, 3,4in.	5Gal. S/S spill Manhole with standard pump*	49#	495.46
SCM-15	2, 3,4in.	15Gal. S/S spill Manhole with standard pump*	80#	712.88
SCM-15	6in.	15Gal. S/S spill Manhole with standard pump*	81#	892.10
SCM-5C	2, 3,4in.	5Gal. C/S spill Manhole with standard pump*	49#	400.30
SCM-5CP	2, 3,4in.	5Gal. C/S spill Manhole with standard pump no sump*	49#	349.93
SCM-5CNP	2, 3,4in.	5Gal. C/S spill Manhole only (no pump or sump)	50#	331.36
SCM-5DG		5Gal. water tight double wall galvanized outer with S/S inner containment	98#	877.51
SCM-5DS		5Gal. water tight double wall S/S outer and inner containment	98#	1081.21
SCM-5DFL		5Gal. water tight double wall S/S outer and inner containment w/ chemthane	98#	1165.64
coating SCM-5D-ENC		(NC) 5Gal. water tight double wall carbon steel outer and inner	98#	774.17
containment with				
		chemthane coating and sensor	157#	1856.12
SCM-15D		15Gal. S/S outer and inner containment	98#	1548.31
SCM-5-DEF		5 Gal. All stainless steel containment bucket with s/s flange, pump & DEF gasket	28#	425.32
SCM-5-NR/NC		5 Gal. All stainless steel containment with no ring & no cover, with pump		

## OPTIONS

Hand Pump

\*Add "WT" to SCM Series for Watertight Cover

\*Add "S" to SCM Series for Stainless Steel One Stroke Pump with Teflon Seals

\*Add "SC" to SCM Series for secondary containment piping connection

38.88

106.29

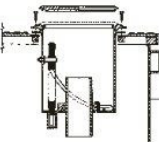
5Gal.

Call Factory

15 Gal.

174.43

## STAINLESS STEEL SPILL CONTAINERS FOR NON WATER TIGHT MULTI ACCESS MANHOLES

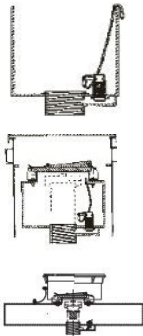


SCM-5-RETRO	2, 3,4in.	5Gal. S/S spill Container with standard pump*	50#	495.46
SCM-15-RETRO	2, 3,4in.	15Gal. S/S spill Container with standard pump*	80#	712.88

## STAINLESS STEEL SPILL CONTAINERS FOR WATER TIGHT MULTI ACCESS MANHOLES

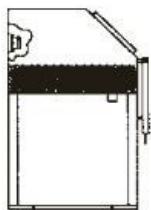
SCM-5-WT-RETRO	2, 3,4in.	5Gal. S/S spill Container with standard pump*	25#	332.80
SCM-15-WT-RETRO	2, 3,4in.	15Gal. S/S spill Container with standard pump*	54#	630.62

## BELOW GRADE SPILL CONTAINMENT MANHOLES

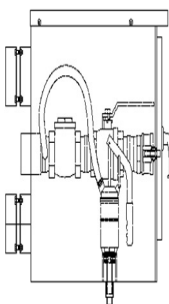


SC-5	4in.	5 Gal. C/S open top spill Container with manual pull drain for Below Grade Application	24#	424.55
SC-5-S	4in.	5 Gal. S/S open top spill Container with manual pull drain for Below Grade Application	24#	529.55
SC-5P	4in.	5 Gal. C/S open top spill Container with pump for Below Grade Application	24#	424.55
BGSC-5	4in.	5 Gal. Below Grade hatch style S/S Container, pull drain with 18in. dia x 18in. deep street manhole	120#	1206.07
BGSC-15	4in.	15Gal. Below Grade hatch style S/S Container, pull drain with 24in. dia x 28in deep street manhole	145#	1491.54
BGSC-15/SB	4in.	15 Gal. Below Grade S/S Container, auto drain w/361 wt-12in. skirt street access Manhole. 20in access port	307#	2946.22

# ABOVE GROUND SPILL CONTAINERS



MODEL#	SIZE	DESCRIPTION	WT(LBS)	PRICE
<b>REMOTE FILL PORTS</b>				
RFP-2/3/4	2, 3, 4in.	Remote fill port, S/S w/ lockable hinged door, complete with one 2, 3, or 4in. flexible inlet port	70#	1294.38
RFPC-2/3/4	2, 3, 4in.	Remote fill port, C/S w/lockable hinged door, prime painted, w/ one 2, 3, or 4in. flexible inlet port	70#	738.56
FB-2/3/4	2, 3, 4in.	Additional factory installed 2,3 or 4in. flexible inlet port	8#	138.47

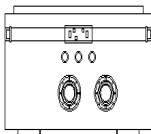


## ARFP SERIES ASSEMBLED REMOTE FILL PORTS

ARFP-2/TOP	2in.	S/S assembled remote fill w/cap, adapter, nipple & clamp	107#	2124.45
ARFPC-2/TOP	2in.	C/S assembled remote fill w/cap, adapter, nipple & clamp - powder coated white	109#	1186.62
ARFP-2/REAR	2in.	S/S assembled remote fill w/cap, adapter, nipple & clamp	108#	2084.81
ARFPC-2/REAR	2in.	C/S assembled remote fill w/cap, adapter, nipple & clamp - powder coated white	110#	1148.12
ARFP-3/TOP	3in.	S/S assembled remote fill w/cap, adapter, nipple & clamp	110#	2921.17
ARFPC-3/TOP	3in.	C/S assembled remote fill w/cap, adapter, nipple & clamp - powder coated white	110#	1404.90
ARFP-3/REAR	3in.	S/S assembled remote fill w/cap, adapter, nipple & clamp	110#	2726.10
ARFPC-3/REAR	3in.	C/S assembled remote fill w/cap, adapter, nipple & clamp - powder coated white	110#	1366.41
ARFP-3V/REAR	3in.	S/S assembled remote fill w/cap, adapter, nipple & clamp with vapor	110#	3209.47
ARFPC-3V/REAR	3in.	C/S assembled remote fill w/cap, adapter, nipple & clamp with vapor	110#	1546.87
ARFP-3V/TOP	3in.	S/S assembled remote fill w/cap, adapter, nipple & clamp with vapor	110#	3319.54
ARFPC-3V/TOP	3in.	C/S assembled remote fill w/cap, adapter, nipple & clamp with vapor - powder coated white	110#	1585.37
ARFP-4/TOP	4in.	S/S assembled remote fill w/cap, adapter, nipple & clamp	114#	3135.42
ARFPC-4/TOP	4in.	C/S assembled remote fill w/cap, adapter, nipple & clamp - powder coated white	114#	1504.59
ARFP-4/REAR	4in.	S/S assembled remote fill w/cap, adapter, nipple & clamp	114#	2940.65
ARFPC-4/REAR	4in.	C/S assembled remote fill w/cap, adapter, nipple & clamp - powder coated white	114#	1466.09
ARFP-4V/TOP	4in.	S/S assembled remote fill w/cap, adapter, nipple & clamp with vapor	114#	3747.89
ARFP-4V/REAR	4in.	S/S assembled remote fill w/cap, adapter, nipple & clamp with vapor	114#	3618.08
ARFPC-4V/TOP	4in.	C/S assembled remote fill w/cap, adapter, nipple & clamp with vapor - powder coated white	114#	1793.34
ARFPC-4V/REAR	4in.	C/S assembled remote fill w/cap, adapter, nipple & clamp with vapor - powder coated white	114#	1688.84

## OPTIONS

Vapor Adapter				Call Factory
3P	3in. x 60in sch. 40 pipe post w/ clamps	6#	156.62	
CC	3/4in. conduit coupling welded where required	1#	98.92	
WMB	Wall mounting brackets or flush mount frame	2#	350.00	
VC	Vapor clamp only	1#	64.28	

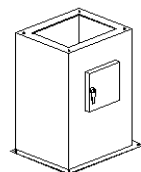


## DP SERIES DISPENSER PLATFORMS

DP-1	2, 3, 4in.	Single product A/G dispenser platform	35#	1476.42
DP-2	2, 3, 4in.	Dual product A/G dispenser platform	45#	1705.74
DP-S1-P		Dispenser platform for the Wayne S1	45#	1366.55
DP-S1-W		Wall mount dispenser for the Wayne S1	45#	1456.65
DPC-1		C/S Single product A/G dispenser platform - powder coated white	35#	874.50
DPC-2		C/S Dual product A/G dispenser platform - powder coated white		1094.50

## OPTIONS

TOK	Tokheim valve bracket	2#	123.66	
EBW	EBW Valve Bracket	2#	123.65	
RAP	Rear access panel	5#	153.32	
VR	1 1/2in. NPT welded vapor recovery penetration fitting	1#	98.392	
CC	3/4in. conduit coupling welded where required	1#	98.92	
DWP	Double wall piping penetration fitting	5#	120.36	

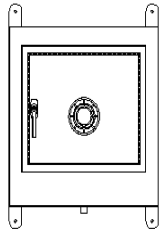


For any custom configurations please contact the factory @ 800-207-7265 or @ fairfield-industries.com

# ABOVE GROUND SPILL CONTAINERS

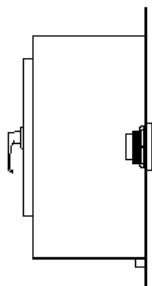


MODEL#	SIZE	DESCRIPTION	WT(LBS)	PRICE
<b>SPILL CONTAINERS FOR ABOVE GROUND TANKS</b>				
AGSC-3/CS	2in.	3.5 Gal. C/S Spill Container with hinged cover & pull drain - powder coated white	30#	166.45
AGSC-7	4in.	7 Gal. S/S Spill Container with hinged cover & pull drain	30#	584.56
AGSC-7/CS	4in.	7 Gal. C/S Spill Container with hinged cover & pull drain - powder coated white	30#	276.74
AGSC-10	4in.	10 Gal. S/S Spill Container with hinged cover & pull drain	32#	708.97
AGSC-15	4in.	15 Gal. S/S Spill Container with hinged cover & pull drain	38#	853.97
AGSC-20	4in.	20 Gal. S/S Spill Container with hinged cover & pull drain	40#	941.23
WODB-5	4, 3,2in.	5 Gal. waste Oil Containment basin with hinged cover	22#	473.66
WMB		Wall mounting brackets - added at the factory prior to shipment	5#	99.74



## REMOTE FILL PORT SERIES - 12IN. DEPTH

RFP/24F-1 PORT	24x24x12in.	Heavy gauge S/S ¼" flush mounting plate & housing with flexible boot connection	107#	1950.96
RFP/24W-1-PORT	24x24x12in.	Heavy gauge S/S wall mount & housing with flexible boot connection	109#	1866.13
RFP/24F-2 PORT	24x24x12in.	Heavy gauge S/S ¼" flush mounting plate & housing with flexible boot connection	108#	2085.13
RFP/24W-2-PORT	24x24x12in.	Heavy gauge S/S wall mount & housing with flexible boot connection	110#	1995.03
RFP/24F-3 PORT	24x36x12in.	Heavy gauge S/S ¼" flush mounting plate & housing with flexible boot connection	107#	2610.82
RFP/24W- PORT	24x36x12in.	Heavy gauge S/S wall mount & housing with flexible boot connection	109#	2545.13
RFP/24F-4 PORT	24x48x12in.	Heavy gauge S/S ¼" flush mounting plate & housing with flexible boot connection	108#	3098.04
RFP/24W-4-PORT	24x48x12in.	Heavy gauge S/S wall mount & housing with flexible boot connection	110#	2962.35

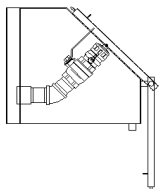


## REMOTE FILL PORT SERIES - 18IN. DEPTH

RFP/24F-1 PORT	24x24x18in.	¼" S/S flush mounting plate & housing with flexible boot connect.	2909.99
RFP/24W-1 PORT	24x24x18in.	Heavy gauge S/S wall mount & housing with flexible boot connect	2783.47
RFP/24F-2 PORT	24x24x18in.	¼" S/S flush mounting plate & housing with flexible boot connect.	3046.37
RFP/24W-2 PORT	24x24x18in.	Heavy gauge S/S wall mount & housing with flexible boot connect	2913.87
RFP/24F-3 PORT	24x36x18in.	¼" S/S flush mounting plate & housing with flexible boot connect.	3264.14
RFP/24W-3 PORT	24x36x18in.	Heavy gauge S/S wall mount & housing with flexible boot connect	3172.29
RFP/24F-4 PORT	24x48x18in.	¼" S/S flush mounting plate & housing with flexible boot connect.	3597.43
RFP/24W-4 PORT	24x48x18in.	Heavy gauge S/S wall mount & housing with flexible boot connect.	3441.02

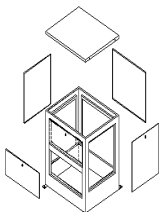
Please specify wall mount or flush mount along with pipe size

## Available In Any Custom Size:



## "Caustic Spill Containment"

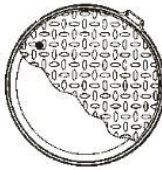


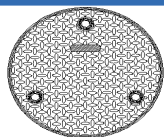
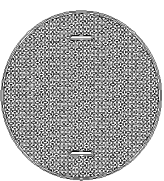

**Call Factory**



## "HOSE REEL ENCLOSURES"

**Call Factory**

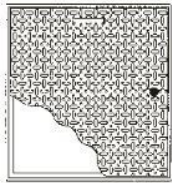
# STREET ACCESS MANHOLES

	MODEL#	SIZE	DESCRIPTION	WT(LBS)	PRICE
	80, 120 AND 180 SERIES MANHOLES				
	80-8	8in. Dia.	Manhole/8in. Skirt/Cast Frame and Cover	15#	54.36
	80-12	8in. Dia.	Manhole/12in. Skirt/Cast Frame and Cover	18#	58.65
	120-8	12in Dia.	Manhole/8in. Skirt/Cast Frame and Cover	25#	75.82
	120-12	12in. Dia.	Manhole/12in. Skirt/Cast Frame and Cover	28#	85.83
	180-8	18in. Dia.	Manhole/8in. Skirt/Cast Frame/ Diamond Plate Cover	60#	168.81
	180-12	18in. Dia.	Manhole/12in. Skirt/Cast Frame/ Diamond Plate Cover	64#	178.14
	180-18	18in. Dia.	Manhole/18in. Skirt/Cast Frame/ Diamond Plate Cover	72#	196.09
	MONITOR WELL MANHOLES WATERTIGHT				
	50-MW-5	5in. Dia.	Manhole/5in. Skirt with gasket cast cover and S/S bolts with cast MW designations	8#	54.36
	80-MW-8	8in. Dia.	Manhole/8in. Skirt with gasket cast cover and S/S bolts with cast MW designations	15#	55.65
	80-MW-12	8in. Dia.	Manhole/12in. Skirt with gasket cast cover and S/S bolts with cast MW designations	18#	70.10
	120-MW-8	12in. Dia.	Manhole/8in. Skirt with gasket cast cover and S/S bolts with cast MW designations	25#	101.57
	120-MW-12	12in. Dia.	Manhole/12in. Skirt with gasket cast cover and S/S bolts with cast MW designations	28#	111.59
	180-MW-12	18in. Dia.	Manhole/12in. Skirt with gasket cast cover and S/S bolts with cast MW designations	53#	254.67
	TANK MONITOR WELL MANHOLES WATERTIGHT				
	180-TMW-8	18in.Dia	Manhole/8in. Skirt with gasket cast cover and S/S bolts with cast TMW designations	50#	241.80
	180-TMW-12	18in. Dia.	Manhole/8in. Skirt with gasket cast cover and S/S bolts with cast TMW designations	53#	254.67
	180-TMW-18	18in. Dia.	Manhole/8in. Skirt with gasket cast cover and S/S bolts with cast TMW designations	69#	267.54
	NEW WATER TIGHT LOCKING MANHOLE				
	180WTL	18" WATER-TIGHT LOCKING COVER WITH (3) CAM-LOCKS & TAG			336.45
	ID Tag	Stainless steel ID tag MTO			Call Factory
	HEAVY DUTY SOLID COVER STEEL - STREET ACCESS MANHOLES				
	240 HD	24in. Dia.	Manhole/12in. Skirt with diamond Plate cover	86#	438.20
	300 HD	30in. Dia.	Manhole/12in. Skirt with diamond plate cover	123#	519.98
	360 HD	36in. Dia.	Manhole/12in. Skirt with diamond plate cover	166#	564.15
	380 HD	38in. Dia.	Manhole/12in. Skirt with diamond plate cover	183#	778.82
	420 HD	42in. Dia.	Manhole/12in. Skirt with diamond Plate cover	266#	1091.37
	480 HD	48in. Dia.	Manhole/12in. Skirt with diamond plate cover	339#	1306.85
	HEAVY DUTY WATER TIGHT SOLID COVER - STREET ACCESS MANHOLES				
	120 WT	12in. Dia.	Manhole/12in. Skirt with dia. pate water tight cover	25#	147.15
	180 WT	18in. Dia.	Manhole/12in. Skirt with dia. plate water tight cover	53#	291.04
	240 WT	24in. Dia.	Manhole/12in. Skirt with dia. plate water tight cover	86#	532.89
	300 WT	30in. Dia.	Manhole/12in. Skirt with dia. plate water tight cover	123#	637.29
	360 WT	36in. Dia.	Manhole/12in. Skirt with dia. plate water tight cover	166#	815.46
	380 WT	38in. Dia.	Manhole/12in. Skirt with dia. plate water tight cover	183#	970.20
	420 WT	42in. Dia.	Manhole/12in. Skirt with dia. plate water tight cover	266#	1206.06
	480 WT	48in. Dia.	Manhole/12in. Skirt with dia. plate water tight cover	339#	1565.65

# STREET ACCESS MANHOLES



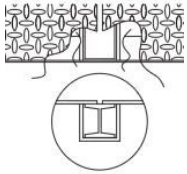
MODEL#	SIZE	DESCRIPTION	WT(LBS)	PRICE
<b>WATER TIGHT CAM LOCKING SOLID COVER STREET ACCESS MANHOLES HEAVY DUTY</b>				
240WTL	24in. Dia.	Manhole/12in. Skirt/Solid Cover Diamond Plate w/ gasket, cam lock & picking eye	86#	618.45
300WTL	30in. Dia.	Manhole/12in. Skirt/Solid Cover Diamond Plate w/ gasket, cam lock & picking eye	123#	668.07
360WTL	36in. Dia.	Manhole/12in. Skirt/Solid Cover Diamond Plate w/ gasket, cam lock & picking eye	166#	887.09
380WTL	38in. Dia.	Manhole/12in. Skirt/Solid Cover Diamond Plate w/ gasket, cam lock & picking eye	183#	933.27
420WTL	42in. Dia.	Manhole/12in. Skirt/Solid Cover Diamond Plate w/ gasket, cam lock & picking eye	266#	1211.71
480WTL	48in. Dia.	Manhole/12in. Skirt/Solid Cover Diamond Plate w/ gasket, cam lock & picking eye	339#	1705.01



## HEAVY DUTY SQUARE & RECTANGULAR MANHOLES SOLID COVERS

18S	18in.	Square Manhole with Diamond Plate Cover	57#	210.70
20S	20in.	Square Manhole with Diamond Plate Cover	68#	222.83
24S	24in.	Square Manhole with Diamond Plate Cover	93#	258.85
30S	30in.	Square Manhole with Diamond Plate Cover	136#	469.37
36S	36in.	Square Manhole with Diamond Plate Cover	188#	628.67
42S	42in.	Square Manhole with Diamond Plate Cover	342#	925.03
48S	48in.	Square Manhole with Diamond Plate Cover	434#	1158.00

Custom sizes made to order sizes upon request - please call factory @ 800-207-7265



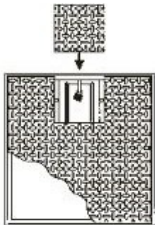
## S/R MTO SERIES: SQUARE & RECTANGULAR-H-20 & H-25 LOAD RATED

### MADE TO ORDER CUSTOM MANHOLES

#### Includes:

Single Cover or Multi Cover  
Manholes with Removable Middle- I-  
Beam Support

Please Call Factory @ 800-207-7265



## HEAVY DUTY SQUARE LOCKING MANHOLES

24SL	24in.	Square Manhole with Lockable Diamond Plate Cover	95#	522.47
30SL	30in.	Square Manhole with Lockable Diamond Plate Cover	138#	743.97
36SL	36in.	Square Manhole with Lockable Diamond Plate Cover	190#	979.86
42SL	42in.	Square Manhole with Lockable Diamond Plate Cover	345#	1371.26
48SL	48in.	Square Manhole with Lockable Diamond Plate Cover	442#	1447.57

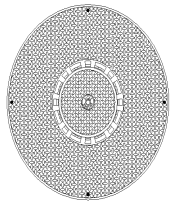
Custom sizes made to order sizes upon request - please call factory @ 800-207-7265

# SPECIALTY STREET ACCESS MANHOLES



MODEL#	SIZE	DESCRIPTION	WT(LBS)	PRICE
<b>DUAL ACCESS SINGLE PORT HEAVY DUTY MANHOLES</b>				
301	30in. Dia.	Manhole/12in. Skirt 30in. Dia. w/ Single 14in. Center AccessPort	142#	755.66
361	36in. Dia.	Manhole/12in. Skirt 36in. Dia. w/ Single 14in. Center AccessPort	185#	806.82
381	38in. Dia.	Manhole/12in. Skirt 38in. Dia. w/ Single 14in. Center AccessPort	201#	901.06
421	42in. Dia.	Manhole/12in. Skirt 42in. Dia. w/ Single 14in. Center AccessPort	285#	1301.89
481	48in. Dia.	Manhole/12in. Skirt 48in. Dia. w/ Single 14in. Center AccessPort	349#	1778.68
<b>Custom sizes made to order sizes upon request - please call factory @ 800-207-7265</b>				

**Custom sizes made to order sizes upon request - please call factory @ 800-207-7265**

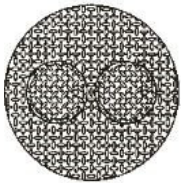


<b>WATER TIGHT DUAL ACCESS SINGLE PORT HEAVY DUTY MANHOLES</b>				
301WT	30in. Dia.	Manhole/12in. Skirt /Reinf. Cover w/ gasket, bolts and single center 11 1/2in. Rain tight Access Port	142#	878.77
361WT	36in. Dia.	Manhole/12in. Skirt/Reinf. Cover w/ gasket, bolts and single center 11 1/2in. Rain tight Access Port	185#	930.16
381WT	38in. Dia.	Manhole/12in. Skirt/Reinf. Cover w/ gasket, bolts and single center 11 1/2in. Rain tight Access Port	201#	1048.36
421WT	42in. Dia.	Manhole/12in. Skirt/Reinf. Cover w/ gasket, bolts and single center 11 1/2in. Rain tight Access Port	285#	1324.15
481WT	48in. Dia.	Manhole/12in. Skirt/Reinf. Cover w/ gasket, bolts and single center 11 1/2in. Rain tight Access Port	349#	1889.82

**Custom sizes made to order sizes upon request - please call factory @ 800-207-7265**

## OPTIONS

SKE-XX	Skirt extensions - please denote dimensions with XX	Call Factory
--------	---	--------------



<b>TRIPPLE ACCESS DUAL PORT HEAVY DUTY MANHOLES</b>				
362	36in. Dia.	Manhole/12in. Skirt Cover 36in. Dia. w/ Dual 14in. Access Ports	205#	1029.53
382	38in. Dia.	Manhole/12in. Skirt Cover 38in. Dia. w/ Dual 14in. Access Ports	220#	1223.13
422	42in. Dia.	Manhole/12in. Skirt Cover 42in. Dia. w/ Dual 14in. Access Ports	305#	1322.56
482	48in. Dia.	Manhole/12in. Skirt Cover 48in. Dia. w/ Dual 14in. Access Ports	368#	1847.94

**Custom sizes made to order sizes upon request - please call factory @ 800-207-7265**

## OPTIONS

SKE-XX	Skirt extensions - please denote dimensions with XX	Call Factory
Optional 8in. access port in 36in., 42in. or 28in. cover along with dual primary ports		102.53





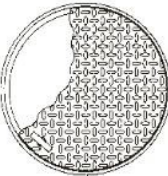
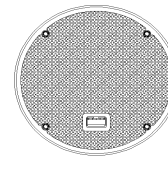
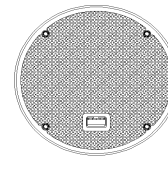
<b>WATER TIGHT TRIPPLE ACCESS DUAL PORT HEAVY DUTY MANHOLES</b>				
362WT	36in. Dia.	Manhole/12in. Skirt/Reinf. Cover w/ gasket, bolts, and dual 11 1/2in. Rain tight Access Ports	205#	1169.99
382WT	38in. Dia.	Manhole/12in. Skirt/Reinf. Cover w/ gasket, bolts, and dual 11 1/2in. Rain tight Access Ports	220#	1370.41
422WT	42in. Dia.	Manhole/12in. Skirt/Reinf. Cover w/ gasket, bolts, and dual 11 1/2in. Rain tight Access Ports	305#	1425.24
482WT	48in. Dia.	Manhole/12in. Skirt/Reinf. Cover w/ gasket, bolts, and dual 11 1/2in. Rain tight Access Ports	368#	2087.77

**Custom sizes made to order sizes upon request - please call factory @ 800-207-7265**

## OPTIONS

SKE-XX	Skirt extensions - please denote dimensions with XX	Call Factory
--------	---	--------------

# SPECIALTY STREET ACCESS MANHOLES

	MODEL#	SIZE	DESCRIPTION	WT(LBS)	PRICE
	<b>QUAD ACCESS TRIPLE PORT HEAVY DUTY MANHOLES</b>				
	363	36in. Dia.	Manhole/12in.Skirt/Reinf. 36in. Dia. cover w/ gasket, bolt, and (3) Rain tight ports (2) 11 5/8in. and (1) 8 1/2in.	215#	1055.23
	383	38in. Dia.	Manhole/12in.Skirt/Reinf. 38in. Dia. cover w/ gasket, bolt, and (3) Rain tight ports (2) 11 5/8in. and (1) 8 1/2in.	230#	1248.79
	423	42in. Dia.	Manhole/12in.Skirt/Reinf. 42in. Dia. cover w/ gasket, bolt, and (3) Rain tight ports (2) 11 5/8in. and (1) 8 1/2in.	315#	1574.27
	483	48in. Dia.	Manhole/12in.Skirt/Reinf. 48in. Dia. cover w/ gasket, bolt, and (3) Rain tight ports (2) 11 5/8in. and (1) 8 1/2in.	378#	1917.03
	<b>QUAD ACCESS TRIPLE PORT WATER TIGHT MANHOLES</b>				
	363WT	36in. Dia.	Manhole/12in.Skirt, 36in. Dia. cover w/ gasket, bolt, and (3) Rain tight ports (2) 11 5/8in. and (1) 8 1/2in.	215#	1397.83
	383WT	38in. Dia.	Manhole/12in.Skirt, 38in. Dia. cover w/ gasket, bolt, and (3) Rain tight ports (2) 11 5/8in. and (1) 8 1/2in.	230#	1440.64
	423WT	42in. Dia.	Manhole/12in.Skirt, 42in. Dia. cover w/ gasket, bolt, and (3) Rain tight ports (2) 11 5/8in. and (1) 8 1/2in.	315#	1749.00
	483WT	48in. Dia.	Manhole/12in.Skirt, 48in. Dia. cover w/ gasket, bolt, and (3) Rain tight ports (2) 11 5/8in. and (1) 8 1/2in.	378#	2110.02
	<b>EXTRA HEAVY DUTY SOLID COVER STREET ACCESS MANHOLES</b>				
	300XHD	30in. Dia.	Manhole/12in. Skirt/Anchors/Reinf. cover with handle	157#	748.57
	360XHD	36in. Dia.	Manhole/12in. Skirt/Anchors/Reinf. cover with handle	189#	912.27
	380XHD	38in. Dia.	Manhole/12in. Skirt/Anchors/Reinf. cover with handle	214#	980.83
	420XHD	42in. Dia.	Manhole/12in. Skirt/Anchors/Reinf. cover with handle	249#	1295.65
	480XHD	48in. Dia.	Manhole/12in. Skirt/Anchors/Reinf. cover with handle	274#	1700.72
	<b>OPTIONS</b>				
	SKE-XX		Skirt extensions - please denote dimensions with XX		Call Factory
	<b>COMPOSITE MANHOLES</b>				
	390HDC	39in. Dia.	Composite Manhole/12in. Skirt	145#	1039.50
	440HDC	44in. Dia.	Composite Manhole/12in. Skirt	185#	1125.30
	390WTLC	39in. Dia.	Water Tight Composite Manhole with cam lock/12in. Skirt	145#	1142.90
	440WTLC	44in. Dia.	Water Tight Composite Manhole with cam lock/12in. Skirt	185#	1228.70

# REPLACEMENT PARTS

ITEM#	WEIGHT	DESCRIPTION	STANDARD	WATERTIGHT
<b>REPLACEMENT COVERS</b>				
SCM_____14#		SCM SERIES REPLACEMENT COVERS	\$71.30	150.58
SCM5 R/R_____20#		SCM5 RETRO RING ONLY	\$71.30	
SCM15 R/R_____35#		SCM15 RETRO RING ONLY	\$118.87	
80_____5#		HEAVY DUTY COVER	\$23.76	
120_____17#		HEAVY DUTY COVER ONLY FOR STANDARD OR WATERTIGHT	\$55.46	\$71.30
180_____32#		HEAVY DUTY COVER ONLY FOR STANDARD OR WATERTIGHT	\$115.71	\$166.42
50MW_____5#		HEAVY DUTY COVER ONLY WATERTIGHT_____		\$21.60
80MW_____5#		HEAVY DUTY COVER ONLY WATERTIGHT_____		\$23.76
120 MW_____11#		HEAVY DUTY COVER ONLY WATERTIGHT_____		\$71.30
180MW_____45#		HEAVY DUTY COVER ONLY WATERTIGHT_____		\$129.98
240MW D_____47#		HEAVY DUTY COVER ONLY WATERTIGHT		\$234.15
240 _____47#		HEAVY DUTY COVER ONLY FOR STANDARD OR WATERTIGHT	\$299.71	\$365.27
300_____86#		HEAVY DUTY COVER ONLY FOR STANDARD OR WATERTIGHT	\$327.82	\$430.86
360_____125#		HEAVY DUTY COVER ONLY FOR STANDARD OR WATERTIGHT	\$412.11	\$592.62
380_____180#		HEAVY DUTY COVER ONLY FOR STANDARD OR WATERTIGHT	\$580.71	\$683.74
420_____220#		HEAVY DUTY COVER ONLY FOR STANDARD OR WATERTIGHT	\$674.37	\$739.94
480_____280#		HEAVY DUTY COVER ONLY FOR STANDARD OR WATERTIGHT	\$805.52	\$974.12
24S_____65#		HEAVY DUTY COVER_____	\$149.84	
30S_____105#		HEAVY DUTY COVER_____	\$309.08	
36S_____147#		HEAVY DUTY COVER_____	\$393.38	
42S_____263#		HEAVY DUTY COVER_____	\$599.46	
48S_____344#		HEAVY DUTY COVER_____	\$749.32	
301_____100#		HEAVY DUTY COVER ONLY FOR STANDARD OR WATERTIGHT	\$477.66	\$590.07
361_____140#		HEAVY DUTY COVER ONLY FOR STANDARD OR WATERTIGHT	\$524.50	\$627.54
381_____195#		HEAVY DUTY COVER ONLY FOR STANDARD OR WATERTIGHT	\$580.71	\$674.37
421_____235#		HEAVY DUTY COVER ONLY FOR STANDARD OR WATERTIGHT	\$824.24	\$852.33
481_____295#		HEAVY DUTY COVER ONLY FOR STANDARD OR WATERTIGHT	\$983.47	\$1002.47
362_____145#		HEAVY DUTY COVER ONLY FOR STANDARD OR WATERTIGHT	\$664.49	\$768.05

# REPLACEMENT PARTS

ITEM#	WEIGHT	DESCRIPTION	STANDARD	WATERTIGHT
382_____	200#	HEAVY DUTY COVER FOR STANDARD OR WATER TIGHT	\$795.10	\$907.52
422_____	240#	HEAVY DUTY COVER STANDARD OR WATER TIGHT	\$907.57	\$935.94
482_____	300#	HEAVY DUTY COVER FOR STANDARD OR WATER TIGHT	\$964.30	\$1257.38
363_____	165#	HEAVY DUTY COVER FOR STANDARD OR WATER TIGHT	\$690.14	\$907.92
383_____	225#	HEAVY DUTY COVER FOR STANDARD OR WATER TIGHT	\$805.92	\$927.28
423_____	265#	HEAVY DUTY COVER FOR STANDARD OR WATER TIGHT	\$993.11	\$1143.92
483_____	325#	HEAVY DUTY COVER FOR STANDARD OR WATER TIGHT	\$1142.71	\$1255.11

ITEM#	WEIGHT	DESCRIPTION	PRICE
-------	--------	-------------	-------

## ABOVE GROUND SPILL CONTAINER PARTS

BOLT SET_____	2#	STAINLESS STEEL BOLTS_____	\$15.27
PULL DRAIN_____	3#	FFI STYLE RING & PULL DRAIN ASSEMBLY_____	\$111.47
AUTO DRAIN_____	1#	NYC STYLE BRASS AUTO DRAIN VALVE_____	\$92.64
WMB_____	5#	WALL MOUNTING BRACKETS_____	\$133.75

## BELOW GROUND SPILL CONTAINERS

SCMCVRGSK_____	2#	REPLACEMENT GASKET FOR WT COVERS ONLY _____	57.64
SCM 2" SEAL	1.5#	2" REPLACEMENT SEAL_____	45.24
SCM 3" SEAL	1.5#	3" REPLACEMENT SEAL_____	53.56
SCM 4" SEAL	1.5#	4" REPLACEMENT SEAL_____	57.84
SCM 6" SEAL	2#	6" REPLACEMENT SEAL_____	85.70
SCM TOP FLANGE	5#	SCM TOP FLANGE ONLY FOR 2"/ 3"/ 4" SEAL_____	27.51
SCM TOP FLANGE	8#	SCM TOP FLANGE ONLY FOR 6" SEAL_____	80.25
SCM BOLTSET	1#	STAINLESS STEEL BOLTS/ FLAT/ LOCK WASHERS_____	8.60
SCM PUMP CLAMP	1#	PUMP CLAMP REPLACEMENT_____	8.60
SCM5 P/P	2#	SCM5 REPLACEMENT PUMP_____	38.19
SCM15 P/P	4#	SCM15 REPLACEMENT PUMP_____	54.15
SCM5 SS/P	7#	SCM5 STAINLESS STEEL REPLACEMENT PUMP W/TEFLON SEALS	145.75
SCM15 SS/P	9#	SCM15 STAINLESS STEEL REPLACEMENT PUMP W/TEFLON SEALS	158.85
BRASS ADPT_____		4" BRASS ADAPTER_____	290.55
DUST CAP_____		DUST CAP FOR 4" ADAPTER_____	105.58
BGSC HATCH_____		RE PLACEMENT HATCH FOR BGSC SERIES SPILL CONTAINERS	425.94
BGSC-GASKET_____		BGSC RE PLACEMENT HATCH LID GASKET_____	66.42
BGSC-HATCH-GSK-OUT_____		BGSC RE PLACEMENT GASKET WITH (8) BOLTS FOR HATCH_____	86.44

# REPLACEMENT PARTS

ITEM#	WEIGHT	DESCRIPTION	PRICE
<b>RE PLACEMENT GASKETS FOR WATERTIGHT MANHOLES</b>			
GSK-50	1#	50 SERIES	21.66
GSK-80	1#	80 SERIES	21.66
GSK-120	1#	120 SERIES	32.50
GSK-180	2#	180 SERIES	32.50
GSK-240	2#	240 SERIES	64.99
GSK-300	3#	300 SERIES	86.65
GSK-360	3#	360 SERIES	119.87
GSK-380	4#	380 SERIES	129.96
GSK-420	4#	420 SERIES	140.80
GSK-480	4#	480 SERIES	162.46
O-RING GASKET	2#	FOR NEW STYLE WATER TIGHT COVER	68.75
B/S-50-180	2#	BOLT SETS FOR 50 SERIES THRU 180 SERIES	11.90
B/S-240	3#	BOLT SET FOR 240 SERIES	19.05
B/S-300-420	4#	BOLT SETS FOR 300 THRU 420 SERIES	23.83
B/S-480	5#	BOLT SET FOR 480 SERIES	28.57

## WTK KITS WATER TIGHT COVER KITS

240WTK	24" Dia.	Cam Locks / Diamond plate cover With Picking Eyes / Buna-N Gasket	55#	380.29
300WTK	30" Dia.	Cam Locks / Diamond plate cover With Picking Eyes / Buna-N Gasket	84#	451.25
360WTK	36" Dia.	Cam Locks / Diamond plate cover With Picking Eyes / Buna-N Gasket	120#	573.44
380WTK	38" Dia.	Cam Locks / Diamond plate cover With Picking Eyes / Buna-N Gasket	133#	601.02
420WTK	42" Dia.	Cam Locks / Diamond plate cover With Picking Eyes / Buna-N Gasket	211#	782.27
480WTK	48" Dia.	Cam Locks / Diamond plate cover With Picking Eyes / Buna-N Gasket	285#	1014.83
WTLCAM SET	5#	RE PLACEMENT LOCKING CAMS SET OF 4		103.97

## WATER-TIGHT SCM COVER

"OLD-STYLE"



"NEW STYLE"



# INDEX

<b>BELOW GRADE SPILL CONTAINERS</b>	<b>2</b>
SPILL CONTAINMENT MANHOLES FOR UNDERGROUND TANKS	2
DOUBLE WALL SPILL CONTAINMENT FOR UNDERGROUND TANKS	2
STAINLESS STEEL SPILL CONTAINERS FOR NON WATER TIGHT MULTI ACCESS MANHOLES	2
STAINLESS STEEL SPILL CONTAINERS FOR WATER TIGHT MULTI-ACCESS MANHOLES	2
BELOW GRADE SPILL CONTAINMENT MANHOLES	2
<b>ABOVE GROUND SPILL CONTAINERS</b>	<b>2,3,4</b>
REMOTE FILL PORTS	3
ARFP SERIES - ASSEMBLED REMOTE FILL PORTS	3
DP SERIES DISPENSER PLATFORMS	3
REMOTE FILL PORT/24 SERIES - 12" DEPTH	4
REMOTE FILL PORT/24 SERIES - 18" DEPTH	4
SPILL CONTAINERS FOR ABOVE GROUND TANKS	4
<b>STREET ACCESS MANHOLES</b>	<b>5,6</b>
80, 120, and 180 SERIES MANHOLES	5
MONITOR WELL MANHOLES WATER TIGHT	5
MONITOR WELL MANHOLES NON-WATER TIGHT	5
TANK MONITOR MANHOLE NON-WATER TIGHT	5
HEAVY DUTY SOLID COVER STEEL - STREET ACCESS MANHOLES	5
"B" SERIES HEAVY DUTY SOLID COVER STEEL - STREET ACCESS MANHOLES	5
HEAVY DUTY WATER TIGHT SOLID COVER STREET ACCESS MANHOLES	5
"B" SERIES HEAVY DUTY WATER TIGHT SOLID COVER STREET ACCESS MANHOLES	5
WATER TIGHT CAM LOCKING SOLID COVER STREET ACCESS MANHOLES HEAVY DUTY	6
HEAVY DUTY SQUARE & RECTANGULAR MANHOLES SOLID COVERS	6
MADE TO ORDER SQUARE/RECTANGULAR MANHOLES	6
HEAVY DUTY SQUARE LOCKING MANHOLES	6
<b>SPECIALTY STREET ACCESS MANHOLES</b>	<b>7,8</b>
DUAL ACCESS SINGLE PORT HEAVY DUTY MANHOLES	7
WATER TIGHT DUAL ACCESS SINGLE PORT HEAVY DUTY MANHOLES	7
TRIPLE ACCESS DUAL PORT HEAVY DUTY MANHOLES	7
WATER TIGHT TRIPLE ACCESS DUAL PORT HEAVY DUTY MANHOLES	7
QUAD ACCESS TRIPLE PORT HEAVY DUTY MANHOLES	8
QUAD ACCESS TRIPLE PORT WATER TIGHT MANHOLES	8
EXTRA HEAVY DUTY SOLID COVER STREET ACCESS MANHOLES	8
COMPOSITE MANHOLES	8

## REPLACEMENT PARTS

9, 10, 11

### LIMITED WARRANTY:

All Fairfield product are thoroughly tested before shipment and guaranteed to the extent of re-placing only components

Found to be defective in manufacture. **We do not allow claims for labor or consequential damage resulting**

**From purchase, installation, mis-application or transit of our product.**

### CLAIMS:

Our responsibility ceases when products are accepted by transportation carriers. All goods are at the risk of the purchaser after they have been delivered by us to the carrier and receipt obtained.

### PRODUCT & PRICE CHANGES:

This manufacture reserves the right to change designs or prices without notice.

### TERMS & F.O.B.:

Net 30 term' all products FOB. Fairfield Industries.

### RETURN GOODS:

Resaleable material of std. manufacture must not be returned without written permission. Return items must be first class condition resaleable as new and shipping charges prepaid. 25% restocking charge.